



Working for the Birds

The wetland within the Kauhale Wetland Preserve offers a safe place for the endangered Hawaiian Stilts (Ae 'o), Hawaiian Coots ('Alae Ke'oke'o) and Hawaiian Ducks (Koloa maoli) to forage and nest. On February 7, more than 150 volunteers helped prepare the wetland for nesting season by removing pickleweed by hand and stirring up the mud on the protected center island. If left alone, the pickleweed overtakes the muddy ground preferred by the birds for nesting and foraging sites. Scientists report that as a result of the volunteers' efforts, more than 40 pairs of Ae 'o paired up at the wetland in mid-February, more than twice the number of birds that usually frequent the site. Nesting season runs from March thru September. The Hoakalei Cultural Foundation provided lunch and shave ice for all participants. Mahalo to the volunteers from Teachers of America, 'Ewa Beach Elementary, 'Ewa Pu'uloa Outrigger Canoe Club, 'Ewa Pu'uloa Hawaiian Civic Club, DOE's Kupuna Program, 'Ewa Beach Lions Club, Haseko, and our Ocean Pointe and Hoakalei Residents.

IN THIS ISSUE:

Lagoon Plan Progress	2
Accessing Honouliuli's History	4
Guideway Coming Together	6
Caring for the Environment	7
Community News	8

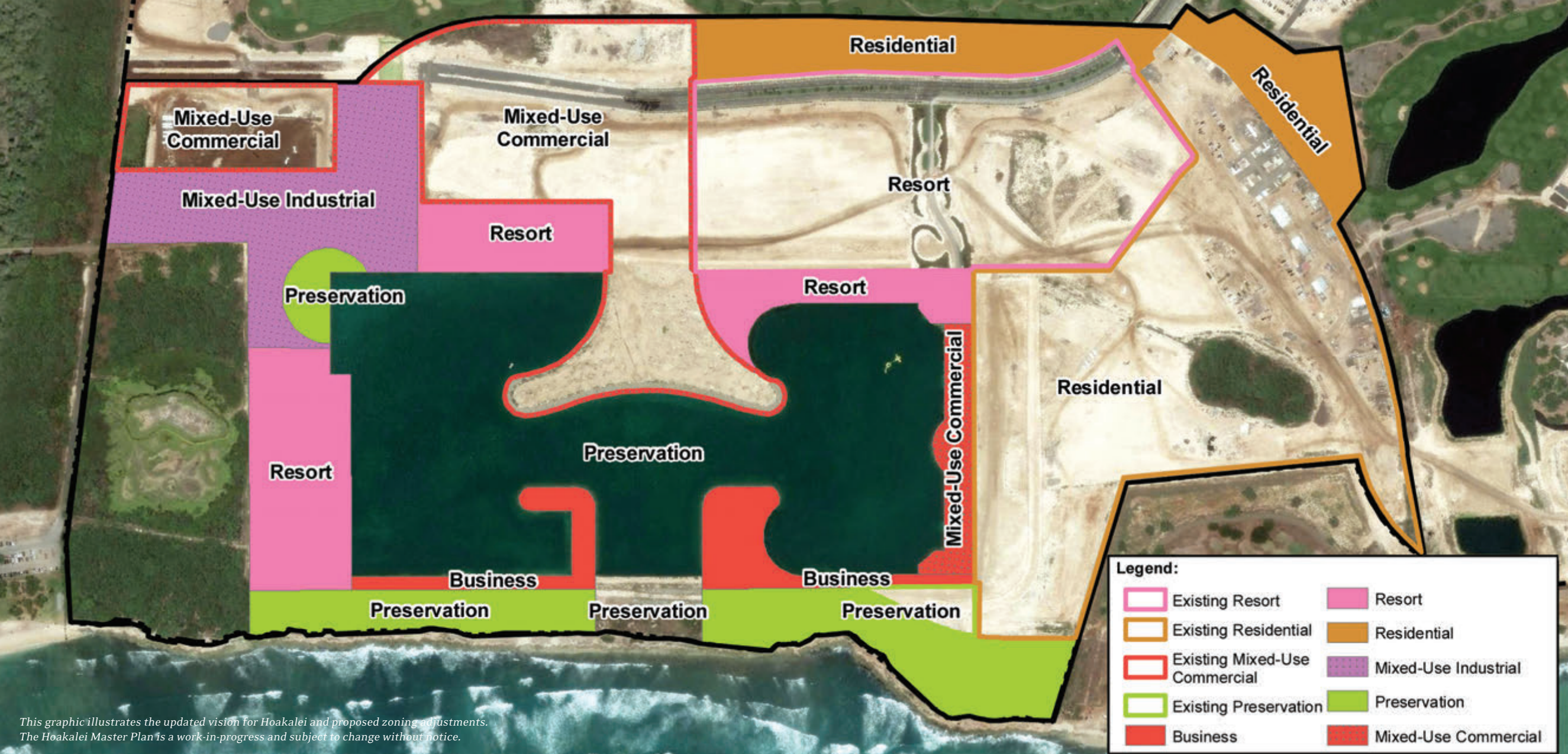
BEACH PARK EXPANSION

One'ula Beach Park's shoreline will soon be nearly doubled in length. Haseko is in the process of conveying oceanfront land to the City to expand its beach park to more than 35 acres.

At the City's request, Haseko completed a new access driveway to the beach park in 2013 across the approximately nine acres of land the company is giving to the City. During construction, Haseko's contractors removed as much overgrowth and trash as their permits allowed to help the City Department of Parks and Recreation prepare the area for eventual public use.

This conveyance requires City Council approval before the expanded park can be opened to the public. Haseko hopes to complete the conveyance process in the next few months. Councilmembers Kymberly Pine and Ron Menor are both already considering what funding is needed to improve the overall beach park.





This graphic illustrates the updated vision for Hoakalei and proposed zoning adjustments. The Hoakalei Master Plan is a work-in-progress and subject to change without notice.

Lagoon Plan Progress

Our goal of energizing the area around the lagoon and creating an exciting destination at Hoakalei is a step closer to fruition. The Final Environmental Impact Statement for our Hoakalei Master Plan Update was accepted by the City and published by the State late last year. In February, Haseko submitted a zone change application to the City to adjust the land uses around the lagoon to better fit our refined master plan and make Hoakalei even more attractive to residents, businesses and resort operators considering coming here.

Instead of keeping all 950 visitor accommodations clustered in one large space, we are seeking permission to spread it out by adding two smaller Resort areas overlooking the northwest (top left) and southwest portions of the lagoon, and to rezone the strip of land makai of the primary Resort parcel overlooking the northeast (top right) portion of the lagoon. This will allow future hotel/timeshare operators to provide a higher level of service to guests than what is allowed under the current zoning.

The total number of visitor accommodations will not change.

We are also asking for Business and Mixed-Use Commercial zoning along the makai edge and eastern end of the lagoon. This will allow small businesses to sell shave ice and convenience items to people enjoying the shoreline trails along the lagoon and ocean, as well as permit watercraft rentals, food stands and cultural kiosks along the pedestrian pathway all the way around the lagoon.

To ensure the oceanfront shoreline maintains its expansive open space, we propose to change the zoning from Waterfront Industrial to Preservation. This will help ensure the existing natural shoreline trail remains open for public use, and limit the types of structures allowed to public comfort stations, possibly play/fitness equipment and shade pavillions. It also ensures nothing is built in the entrance channel area that might prevent another developer from finishing the basin as a marina in the future if desired.

One of the main attractions for kama'āina and visitors alike is anticipated

to be the planned public swimming area in the northwest corner of the lagoon.

Once the zoning for the cove is changed to Preservation, we'll be able to apply for permits to begin construction of this highly-anticipated amenity. The area surrounding the cove is being rezoned to Mixed-Use Industrial to allow for the paid public parking lot, possibly workspace for canoe makers and artisans and a future cultural heritage center.

And we're asking to increase the area where homes can be built to allow for more greenspace and view corridors throughout each neighborhood. Even with this increase in Residential space, the total number of homes allowed for Ocean Pointe-Hoakalei will remain unchanged.

Making Hoakalei a destination where people want to live, work, learn, play and mingle with guests is critical for generating the foot traffic needed to sustain the small businesses and restaurants we want to welcome to our community.

To learn more about our refined master plan, please visit www.Hoakalei.com.

LIFELINE
FIRE AND SECURITY



Local Office, Local Staff, Local Service
Protecting homes and families in Hawaii since 2002

Check us out on the web

www.lifeline-hawaii.com

If your home could talk to you
what would it say?

It could tell you if someone
disarms your security system

It could tell you when someone
opens a door

It could tell you when the
keikis are safe at home

It could let you know you
left the garage door open...

...and then help you close it
using your Smartphone

**Give Your Home a
Voice**



Total Connect by Lifeline



**Proud recipient of the
2013 Community Service Award
from Honeywell- mahalo!**

Call 548-LIFE (5433)



**ACCREDITED
BUSINESS**



Honeywell
Authorized Security Dealer



2045 Lauwiliwili Street #405 Kapolei, HI

Lic. #C-24413

Accessing Honouliuli's History

Thanks to the tremendous research efforts of Hoakalei Cultural Foundation's Executive Director Kepā Maly and his wife Onaona, voluminous amounts of information culled from Hawaiian language document collections, land history records (spanning the traditional Hawaiian period through the plantation era), and other factual historical narratives will soon be available on the Foundation's website.

This collection is intended to serve as educational resource materials for passing on the history of Honouliuli and the larger 'Ewa District in a way that is respectful and which has time depth.

Website visitors will soon be able to search a curated index of resources that include native lore, land tenure (ca. 1840-1915), surveys (ca. 1850-1910), testimonies of witnesses before the Boundary Commission (1870s), and records of land conveyances.

The index also include a collection of historical narratives describing the land and people spanning the period from ca. 1790s to 1940s. that incorpoates a wide range of historical literature describing the larger Honouliuli Ahupua'a. Naratives include primary Hawaiian language documents and

accounts penned by early residents who often witnessed or participated in the histories being described.

The index is expected to be available to the public later this spring at www.hoakaleifoundation.org.



A Storied Landscape Comes to Life

Hoakalei is steeped in a history that spans centuries. While the physical lay of the land has changed with the passing of time and the coming of new people, three historic preserves are kīpuka (oases) of ancient landscape that carry forward the spirit of days gone by.

Haseko supports the development of preservation and interpretive programs through the Hoakalei Cultural Foundation and partners in stewardship of the cultural features across the landscape.

Interpretive signage has recently been installed in the Kauhale and Kuapapa Preservation Areas, by which individuals who travel the trails may learn about the remains of old house

sites, workshops, garden areas, and other features, as well as the life and practices of those who called this land home in earlier times.

A unique integration of modern technology is also a part of the new signs. Scan-able QR codes provide visitors with access to multimedia forms of interpretive experiences. Scan the code with your smart phone and you can hear the voice of elder kama'āina (area natives) sharing their memories of travel and life upon the land between 1920 to 1950.

The Foundation provides guided tours and service project opportunities by appointment. To make arrangements, please email kalama@hoakaleifoundation.org.



OCEAN POINTE RESIDENTS

Change your air filter only ONCE A YEAR!

- Eliminates Dust, Dirt and Filth
- Reduces Allergy & Asthma Symptoms
- Protects your Valuable Furnishings
- Keeps your Ducts Clean Forever

Visit our website at
www.centralairsys.com
 Click on "Indoor Air Quality Solutions" tab

SPECIAL OFFER!
 Your 2nd year replacement media filter is on us. We'll change it out at no charge. That's a \$150.00 value!

808.685.0249



Working on the Rail Guideway

Crews have completed the first two miles of elevated guideway for the Honolulu rail transit project in East Kapolei. The completed guideway - running along Old Farrington Highway in 'Ewa - is the equivalent of 84 spans, or the distance between two columns. As of March, HART has built over 150 columns that will support the elevated guideway. A train ride along the planned 20-mile rail alignment from East Kapolei near Kroc Center to Ala Moana Center will take only 42 minutes.

As rail column work progresses into Waipahu and Pearl City, HART Executive Director and CEO Dan Grabauskas is asking the public for their continued patience and understanding during construction. "For the safety of the workers and traveling public, we ask the drivers to be mindful of our crews stationed along Farrington and Kamehameha highways, the H-1 Freeway and other roads as part of the rail work," Grabauskas said.

For updates on rail-related lane closure days and times, visit HART's project website at www.honolulutransit.org.

HAWAII

MILITARY REALTY INC.™

Specializes in Ewa Beach Home Sales, Buyers and Property Management



David J. Kucic
First Sergeant (Retired)
REALTOR
President and Owner
808 218-9338
David@DavidKucic.com



Tonya H. Kucic
REALTOR-ASSOCIATE
Vice President
Lifelong Military Spouse and Dependent
808 221-3638
Tonya@DavidKucic.com



Jeff Loyd
Sergeant First Class (Retired)
REALTOR-Associate
Buyers, Sellers, Property Management
808 542-6095
Jeff.loyd.himre@gmail.com



Ian Wheeler
Master Sergeant (Retired)
REALTOR-Associate
Buyers, Sellers, Property Management
808 542-4610
awheeler@hawaii.rr.com

91-1282 Kaiohia St. • Ewa Beach, HI 96706

WWW.HIMRE.COM

EWA POINTE REALTY
Residential Sales and Property Management

Ewa Beach Specialist

REAL ESTATE SALES & PROPERTY MANAGEMENT



Megazar M. Juntilla R.
PB (808-277-3719)

Selling and managing properties for 14 years and an outstanding member of the Better Business Bureau

ALWAYS READY TO SERVE!

91-1001 Kaimalie St. Suite 204 B
EWA BEACH, HI 96706
Ph: (808) 689-0660 Fax: (808) 689-6044
www.EwaPointeRealty.com

Caring for the Environment

SCIENTISTS CONDUCT ANNUAL LIMU SURVEY

Scientists from the University of Hawai'i waded into the ocean makai of Ocean Pointe-Hoakalei in March as part of Haseko's ongoing study of the sea. The samples they collect allow them to watch for changes over time in limu and other sea creatures that live there.

For more than a quarter century, Haseko has had scientists monitoring the nearshore waters from One'ula Beach Park to White Plains Beach because we understand the importance of protecting the ocean. It makes sense that we would take care of the natural beauty that attracts home buyers and future resort guests to Hoakalei. Responsible stewardship increases the likelihood that future generations will also be able to enjoy 'Ewa's natural resources.

CANOE CLUB REGISTRATION

Congratulations to the 'Ewa Pu'uloa Outrigger Canoe Club's Junior paddlers for an awesome 2015 Nā 'Ōpio season! The JV Girls took the season's overall First Place in their category.

If you'd like to join the club, Summer season registration is scheduled April 13 -17, 4pm-7pm, for ages 10 and up at the Safeway in 'Ewa Beach.

To learn more about the Club, check out their Facebook page: www.facebook.com/EPOCC or their website: www.ewapuuloaocc.org. Practices are held at the Wai Kai Lagoon and 'Ewa Beach Park.

For more information, email Kau'i Serrao at kauiserrao@hotmail.com



Benson H. Araki, D.D.S., Inc.

THE SMILING PLACE

Where Incredible Smiles are Created!

Family & Cosmetic Dentistry

- Implant Dentistry
- Laser Dentistry
- Crowns & Root Canals
- Customized Dentures & Bridges
- Tooth Whitening

As published in Honolulu Magazine

TOP Dentists In Hawaii

*Strict infection control.
Most Insurances Accepted.
Emergencies Accommodated.*

EWA BEACH
(Ewa Pointe Marketplace)
91-1001 Kaimalie St. #203
Ewa Beach, HI 96706
689-7978

ROYAL KUNIA
(Fronting Walmart)
94-615 Kupuohi St. #206
Waipahu, HI 96797
688-2888

ISLAND REALTY GROUP LLC

Locally Owned & Operated with over 18 Licensed Agents.
Over 15 years of experience helping to serve you.




Full Service Real Estate Services. We Specialize In:



- First time Homebuyers
- Property Management
- Buyer & Seller Representation
- VA Home Loans
- Short Sale Negotiations
- Foreclosure Advice

91-902 Fort Weaver Road Suite 205, Ewa Beach, Hawaii 96706
Phone: (808) 689-7407



Haseko Community Relations
91-1001 Kaimālie Street, Suite 205
‘Ewa Beach, HI 96706

PRST STD
U.S. POSTAGE
PAID
HONOLULU, HI
PERMIT #9882



Building in Hawai‘i for more than 40 years

Community News

Haseko is hosting small gatherings for community members to try their hand at fishing for golden sunfish (commonly known as tilapia) in Wai Kai Lagoon. Bamboo poles and bait will be provided and a special prize awarded to the person who catches the most fish. Space is limited. For more information or to register please call Malia Ikeda at (808) 689-7772 ext 232 or email info@haseko.com.

READ ALOUD EVENTS

In celebration of Dr. Seuss's Birthday, 'Ewa Beach Elementary and Keone'ula Elementary invited community members to participate in their annual Read Aloud events. Volunteers visited classrooms and shared their favorite books with the students in an effort to promote literacy and share why reading is important in every day life. Lisa Enanoria from Haseko (top photo at right) shared a few of her favorite stories with the kindergartners in Mrs. Kanai's class. Weed & Seed Site Coordinator Gale Bracerós read to Ms. Taylor's class class at Keone'ula (middle photo at right).



JUNE 7 PET WALK PLANNED

Poi Dogs and Popoki will hold their 2nd annual West Oahu Pet Walk on Sunday, June 7. Monies raised at this event will help support The Big Fix - reducing pet overpopulation and helping to end euthanasia through affordable spay and neuter. Because Haseko is a sponsor, Ocean Pointe and Hoakalei families will receive a \$10 discount off registration. Please call Malia Ikeda at 689-7772 ext 232 to receive your discount code. For more information, please visit www.poidogsandpopoki.org.

